

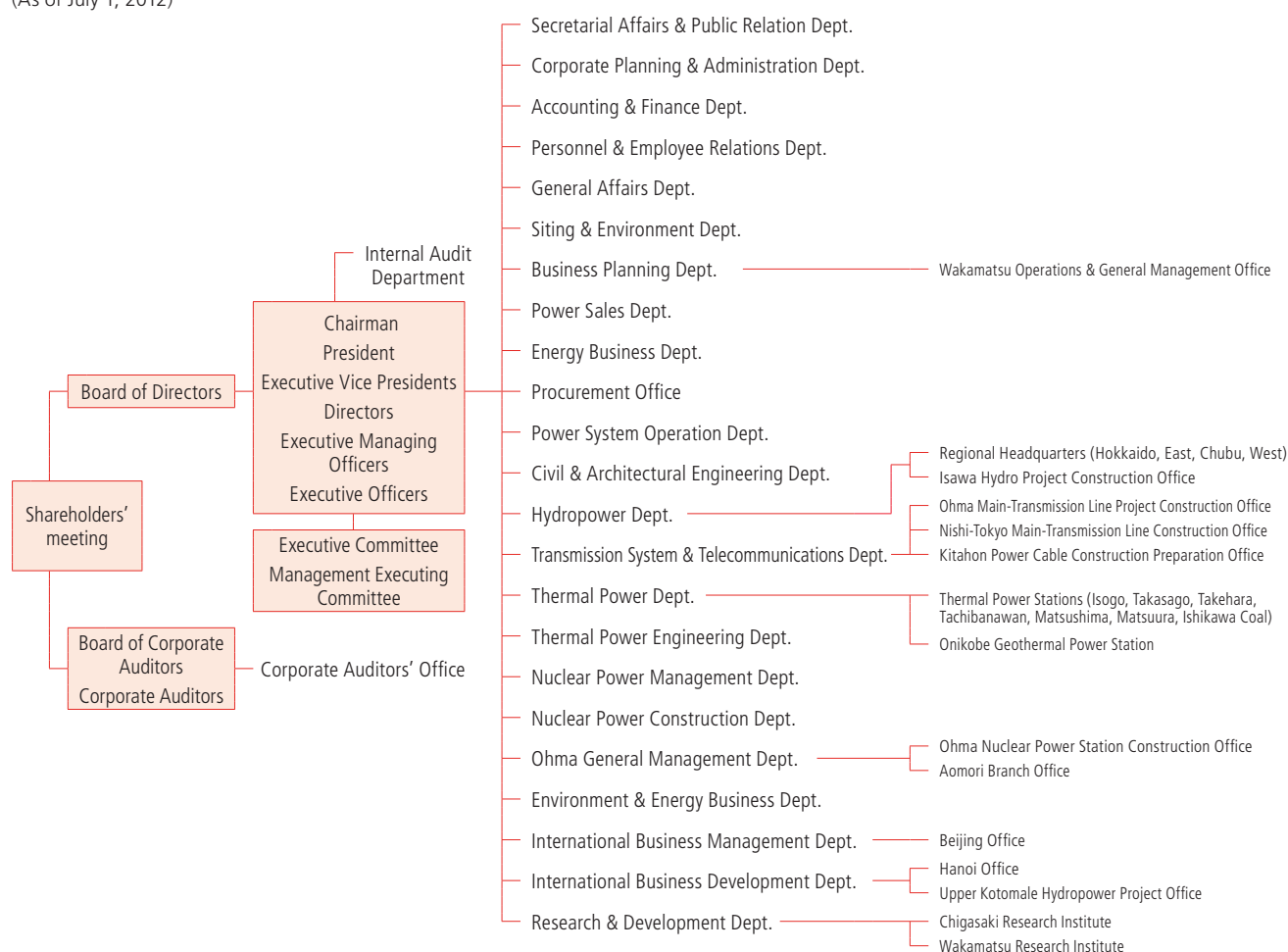
Corporate Profile/Stock Information

(As of March 31, 2012)

Corporate Name	Electric Power Development Co., Ltd.
Communication Name	J-POWER
Date of Establishment	Sept. 16, 1952
Headquarters Address	15-1, Ginza 6-chome, Chuo-ku, Tokyo 104-8165, Japan
Paid-in Capital	¥152,449,600,000
Number of Shares Authorized	660,000,000
Number of Shares Outstanding	166,569,600
Number of Shareholders	38,193
Stock Exchange Listing	Tokyo
Independent Public Accountants	Ernst & Young ShinNihon LLC
Transfer Agent	Sumitomo Mitsui Trust Bank, Limited

Organization Chart

(As of July 1, 2012)



Main Subsidiaries

J-POWER Generation (Thailand) Co., Ltd.
 J-POWER USA Development Co., Ltd.
 J-POWER Consulting (China) Co., Ltd.

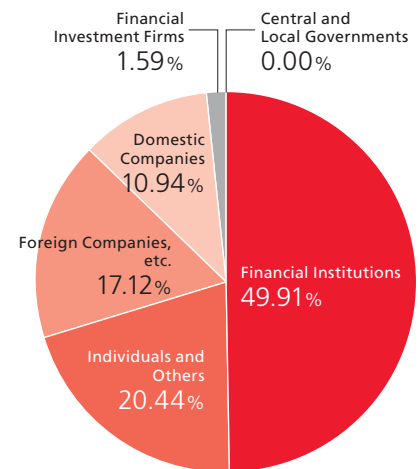
Major Shareholders (Top 10)

Name or Designation	Number of Shares Held (Thousands of Shares)	Percentage of Total Shares Outstanding (%)
Nippon Life Insurance Company	9,120	5.48
Japan Trustee Services Bank, Ltd. (Trust Account)	8,778	5.27
The Master Trust Bank of Japan, Ltd. (Trust Account)	8,047	4.83
Mizuho Corporate Bank, Ltd.	7,465	4.48
Japan Trustee Services Bank, Ltd. (Trust Account 9)	4,747	2.85
Sumitomo Mitsui Banking Corporation	4,295	2.58
J-POWER Employees Shareholding Association	4,036	2.42
The Bank of Tokyo-Mitsubishi UFJ, Ltd.	3,331	2.00
Fukoku Life Insurance Company	2,750	1.65
The Sumitomo Trust and Banking Co., Ltd.	2,247	1.35

Notes: 1. In addition to above, J-POWER holds 16,516,790 shares.

2. As of April 1, 2012, The Sumitomo Trust and Banking Co., Ltd. (The STB) has changed its trade name to Sumitomo Mitsui Trust Bank, Limited established through the merger of three trust banks including The STB.

Breakdown of Issued Shares by Type of Shareholders



Note: Treasury stock of 16,516,790 shares is included in "Individuals and Others."

Common Stock Price Range

Stock Price (Yen)

5,000 —

4,000 —

3,000 —

2,000 —

1,000 —

0 —

1 2 3 4 5 6 7 8 9 10 11 12 1 2 3 4 5 6 7 8 9 10 11 12 1 2 3 4 5 6 7 8 9 10 11 12 1 2 3 4 5 6
2008 2009 2010 2011 2012



Electric Power Development Co., Ltd.

Corporate Planning & Administration Department
Corporate Planning Office

15-1, Ginza 6-chome, Chuo-ku, Tokyo 104-8165, JAPAN
TEL: +81-3-3546-2211 E-mail: investors@jpower.co.jp
<http://www.jpower.co.jp/english/>



Printed in Japan
2012.11