

Major Group Companies

(As of March 31, 2011)

	Company Name	Capital (Millions of yen)	Equity Stake (%)	Main Businesses
Consolidated Subsidiaries	Bay Side Energy Co., Ltd.	2,400	100	Electric power supply
	Green Power Kuzumaki Co., Ltd.	490	100	Construction and operation of wind power plants
	Green Power Awara Co., Ltd.	310	100	Construction and operation of wind power plants
	Hamanasu Windpower Co., Ltd.	271	100	Construction and operation of wind power plants
	J-Wind Tokio Co., Ltd.	250	100	Construction and operation of wind power plants
	J-Wind TAHARA Co., Ltd.	245	100	Construction and operation of wind power plants
	J-Wind IROUZAKI Co., Ltd.	200	100	Construction and operation of wind power plants
	Green Power Setana Co., Ltd.	100	100	Construction and operation of wind power plants
	Green Power Koriyama Nunobiki Co., Ltd.	100	100	Construction and operation of wind power plants
	Dream-Up Tomamae Co., Ltd.	10	100	Construction and operation of wind power plants
	Yuya Wind Power Co., Ltd.	10	100	Construction and operation of wind power plants
	Green Power TOKIWA Co., Ltd.	450	97	Construction and operation of wind power plants
	Green Power Aso Co., Ltd.	490	87	Construction and operation of wind power plants
	ITOIGAWA POWER Inc.	1,006	80	Electric power supply
	Minami Kyushu Wind Power Co., Ltd.	20	80	Construction and operation of wind power plants
	Nagasaki-Shikamachi Wind Power Co., Ltd.	490	70	Construction and operation of wind power plants
	Nikaho-Kogen Wind Power Co., Ltd.	100	67	Construction and operation of wind power plants
	Ichihara Power Co., Ltd.	600	60	Electric power supply
	Sarakitomanai Wind Power Co., Ltd.	30	49	Construction and operation of wind power plants
	J-POWER AUSTRALIA PTY., LTD. (Australia)	118 (millions of A\$)	100	Investments in coal mines in Australia
	JPec Co., Ltd.	500	100	Construction, technical development, design, consulting, maintenance, and research for thermal and nuclear power plants; unloading and transporting of coal to thermal power plants; sale of fly ash; shipping of coal for thermal power plants; research and planning of environmental conservation
	JPHYTECH Co., Ltd.	500	100	Construction, technical development, design, consulting, maintenance, and research for hydroelectric power plants, substations, and transmission lines; surveying and compensation of construction sites;civil engineering, construction management, and construction services
	JP Business Service Corporation	450	100	Operation of welfare facilities; facility maintenance; business process outsourcing; development of computer software
	J-POWER RESOURCES Co., Ltd.	450	100	Import, sales, and transportation of coal
	J-POWER EnTech Co., Inc.	177	100	Engineering of equipment for removal of atmospheric and water pollutants
	KEC Corporation	110	100	Construction and maintenance of electronic and communications facilities
	JPOWER GENEX CAPITAL Co., Ltd.	100	100	Management of IPP projects
	JP Design Co., Ltd.	20	100	Design, management, and research for electric power facilities and other facilities and construction consulting
	EPDC CoalTech and Marine Co., Ltd.	20	100 (100)	Marine transportation of ash and fly ash from thermal power plants
	Miyazaki Wood Pellet Co., Ltd.	300	98	Operation of manufacturing facilities of wood pellets
	J-Power Investment Netherlands B.V. (Netherlands)	66 (millions of US\$)	100	Management of overseas investments
	J-POWER Consulting (China) Co., Ltd. (China)	6 (millions of yuan)	100	Management of overseas investments and research and development projects
	J-Power North America Holdings Co., Ltd. (U.S.A.)	1 (US\$)	100	Management of overseas investments
J-POWER Holdings (Thailand) Co., Ltd. (Thailand)	10,619 (millions of baht)	100 (100)	Management of overseas investments	
J-POWER Generation (Thailand) Co., Ltd. (Thailand)	39 (millions of baht)	100 (100)	Management of overseas investments and research and development projects	
J-POWER USA Investment Co., Ltd. (U.S.A.)	32 (US\$)	100 (100)	Management of overseas investments	
J-POWER USA Development Co., Ltd. (U.S.A.)	1 (US\$)	100 (100)	Research and development of overseas investments	
Orange Grove Energy L.P.	—	100 (100)	Electric power supply	
Kaihatsu Hiryou Co., Ltd.	450	100	Production of fertilizer using ash	
Japan Network Engineering Co., Ltd.	50	100	Telecommunications; operation and maintenance of telecommunications facilities	
Omuta Plant Service Co., Ltd.	50	100	Operation and maintenance of waste-fueled power generation plant	
and 39 companies				

Affiliates Accounted for by the Equity Method	Company Name	Capital (Millions of yen)	Equity Stake (%)	Main Businesses
	Mihama Seaside Power Co., Ltd.	490	50	Electric power supply
	Osaki CoolGen Corporation	490	50	Testing of integrated coal gasification combined cycle and separation and capture of CO ₂
	Yuzawa Geothermal Power Generation Corporation	389	50	Research for commercial development of geothermal resources, development and supply of geothermal resources, and electric power supply
	Setouchi Power Corporation	100	50	Electric power supply
	TOSA POWER Inc.	2,755	45	Electric power supply
	GENEX Co., Ltd.	2,800	40 (40)	Electric power supply
	Shaanxi Hanjiang Investment & Development Co., Ltd. (China)	805 (millions of yuan)	27	Electric power supply
	ShanXi TianShi Power Generation Co., Ltd. (China)	99 (millions of yuan)	24	Electric power supply
	CBK Netherlands Holdings B.V. (Netherlands)	26 (thousands of US\$)	50 (50)	Management of overseas investments
	J-POWER USA Generation, L.P. (U.S.A.)	—	50 (50)	Management of overseas investments
	Birchwood Power Partners, L.P. (U.S.A.)	—	50 (50)	Electric power supply
	Gulf Electric Public Co., Ltd. (Thailand)	13,784 (millions of baht)	49 (49)	Holding company for thermal power generation companies
	Zajaczkowo Windfarm Sp. z o.o. (Poland)	45 (millions of zloty)	45 (45)	Construction and operation of wind power plants
	Chiahui Power Corporation (Taiwan)	4,700 (millions of NT\$)	40 (40)	Electric power supply
	EGCO Green Energy Co., Ltd. (Thailand)	175 (millions of baht)	26 (26)	Management of overseas investments
	EGCO Cogeneration Co., Ltd. (Thailand)	1,060 (millions of baht)	20 (20)	Electric power supply
	Thaioil Power Co., Ltd. (Thailand)	2,810 (millions of baht)	19 (19)	Electric power supply
	CBK Power Co., Ltd. (Philippines)	137 (millions of US\$)	— [100]	Operation of hydroelectric and pumped-storage electric power plants
	Green Country Energy, LLC (U.S.A.)	—	— [100]	Electric power supply
	Pinelawn Power LLC (U.S.A.)	—	— [100]	Electric power supply
	Equus Power I, L.P. (U.S.A.)	—	— [100]	Electric power supply
	Edgewood Energy, LLC	—	— [100]	Electric power supply
	Shoreham Energy, LLC	—	— [100]	Electric power supply
	Roi-Et Green Co., Ltd. (Thailand)	180 (millions of baht)	— [95]	Electric power supply
	Elwood Energy, LLC (U.S.A.)	—	— [50]	Electric power supply
	Tenaska Virginia Partners, L.P. (U.S.A.)	—	— [30]	Electric power supply
	Tenaska Frontier Partners, Ltd. (U.S.A.)	—	— [25]	Electric power supply
	and 49 companies			

Notes: 1. The equity stake values in percentages are indirect holding ratios, while those shown in brackets are the ratios held by a closely related party or parties in agreement.

2. JPec Co., Ltd., J-POWER RESOURCES Co., Ltd. and J-POWER Holdings (Thailand) Co., Ltd. are specified subsidiaries.

3. Because the Limited Liability Company (LLC) and Limited Partnership (L.P.) under U.S. law do not have anything that exactly coincides with the concept of capital, the amount of capital has not been listed.



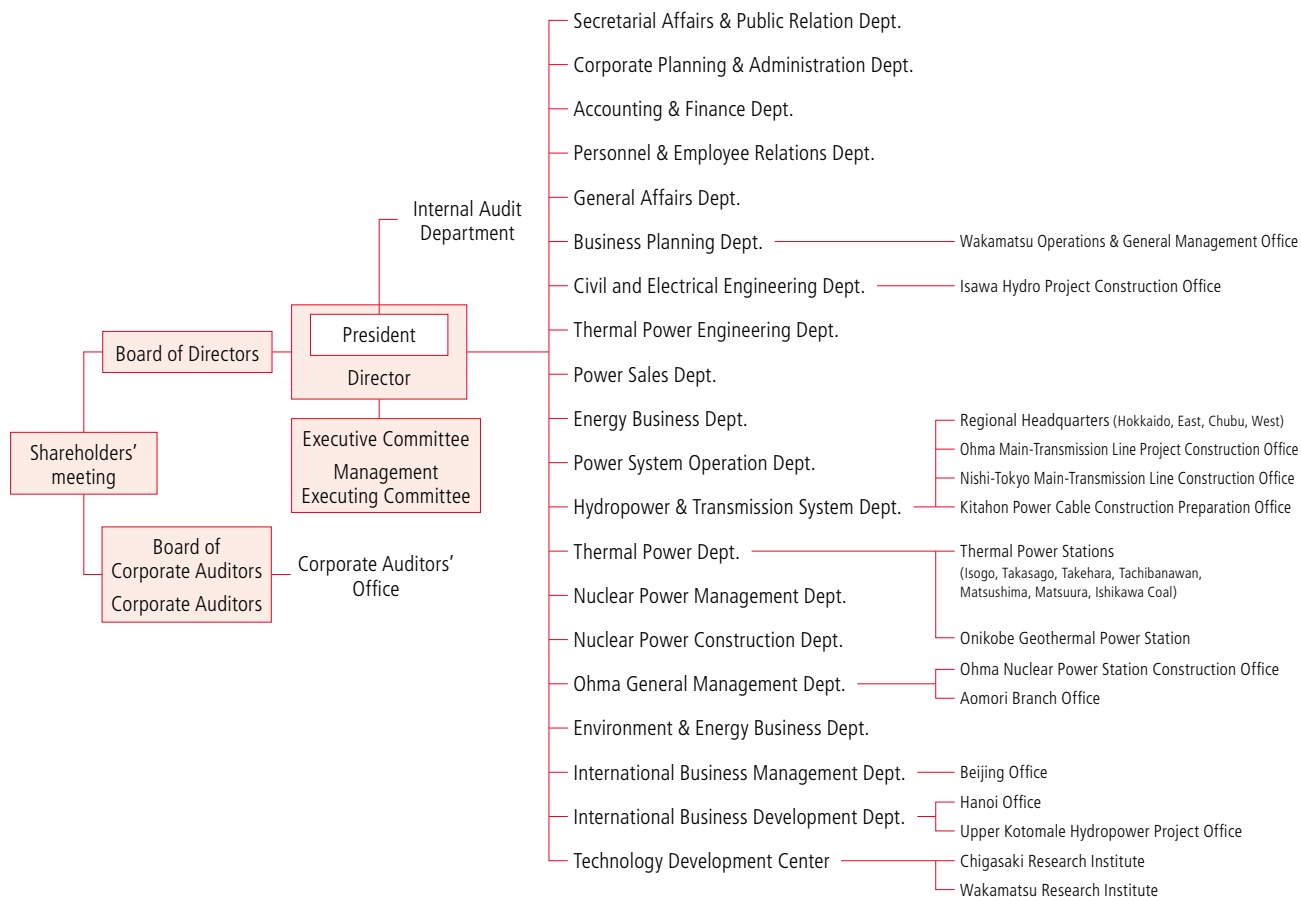
Corporate Profile/Stock Information

(As of March 31, 2011)

Corporate Name	Electric Power Development Co., Ltd.
Communication Name	J-POWER
Date of Establishment	Sept. 16, 1952
Headquarters Address	15-1, Ginza 6-chome, Chuo-ku, Tokyo 104-8165, Japan
Paid-in Capital	¥152,449,600,000
Number of Shares Authorized	660,000,000
Number of Shares Outstanding	166,569,600
Number of Shareholders	38,484
Stock Exchange Listing	Tokyo
Independent Public Accountants	Ernst & Young ShinNihon
Transfer Agent	The Sumitomo Trust and Banking Co., Ltd.

Organization Chart

(As of July 1, 2011)



Main Subsidiaries

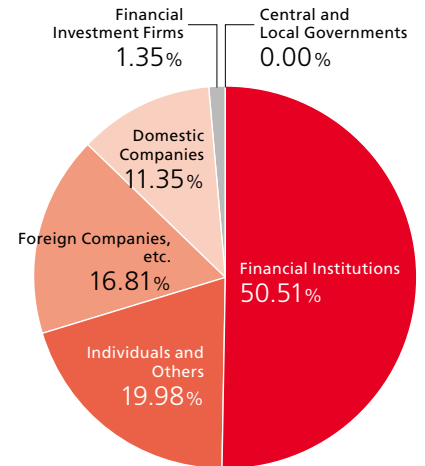
- J-POWER USA Development Co., Ltd.
- J-POWER Generation (Thailand) Co., Ltd.
- J-POWER Consulting (China) Co., Ltd.

Major Shareholders (Top 10)

Name or Designation	Number of Shares Held (Thousands of Shares)	Percentage of Total Shares Outstanding (%)
Nippon Life Insurance Company	9,120	5.48
Japan Trustee Services Bank, Ltd. (Trust Account)	7,616	4.57
Mizuho Corporate Bank, Ltd.	7,465	4.48
The Master Trust Bank of Japan, Ltd. (Trust Account)	6,731	4.04
Sumitomo Mitsui Banking Corporation	4,295	2.58
Japan Trustee Services Bank, Ltd. (Trust Account 9)	4,251	2.55
The Bank of Tokyo-Mitsubishi UFJ, Ltd.	3,736	2.24
J-POWER Employees Shareholding Association	3,602	2.16
National Mutual Insurance Federation of Agricultural Cooperatives	2,949	1.77
Fukoku Life Insurance Company	2,750	1.65

Note: In addition to above, J-POWER holds 16,516,450 shares.

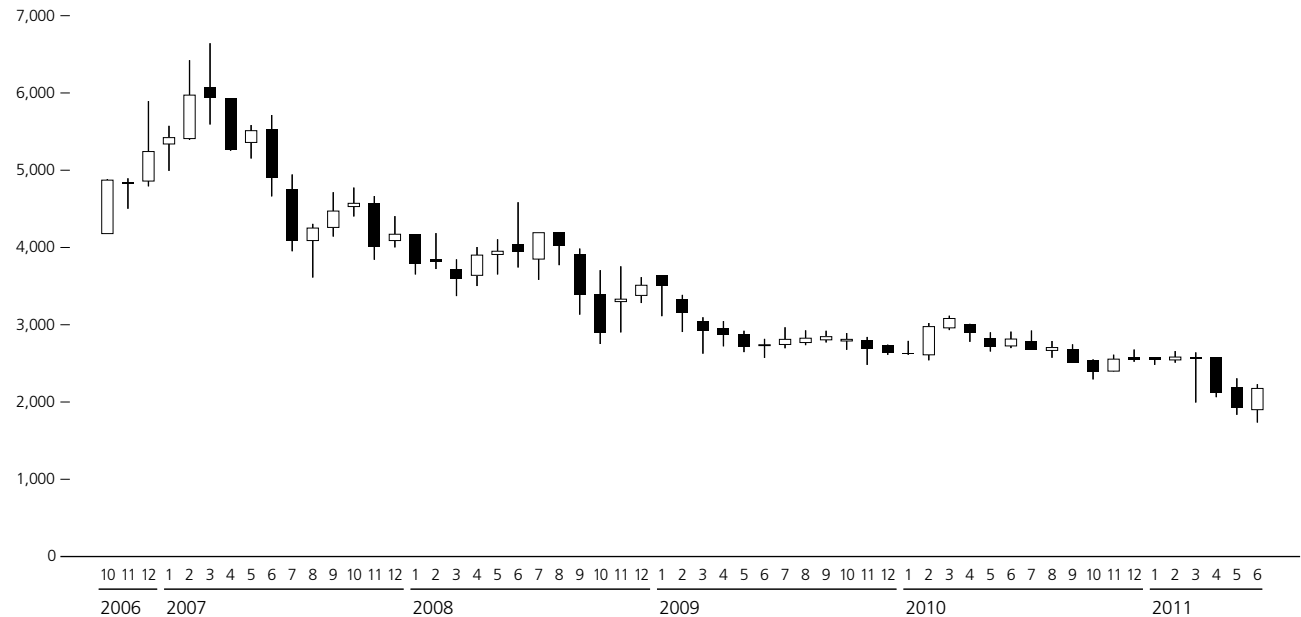
Breakdown of Issued Shares by Type of Shareholders



Note: Treasury stock of 16,516,450 shares is included in "Individuals and Others."

Common Stock Price Range

Stock Price (Yen)
8,000 —





Electric Power Development Company Co., Ltd.

Corporate Planning & Administration Department
Investor Relations Group

15-1, Ginza 6-chome, Chuo-ku, Tokyo 104-8165, JAPAN
TEL: +81-3-3546-2211 E-mail: investors@jpower.co.jp

<http://www.jpower.co.jp>

