

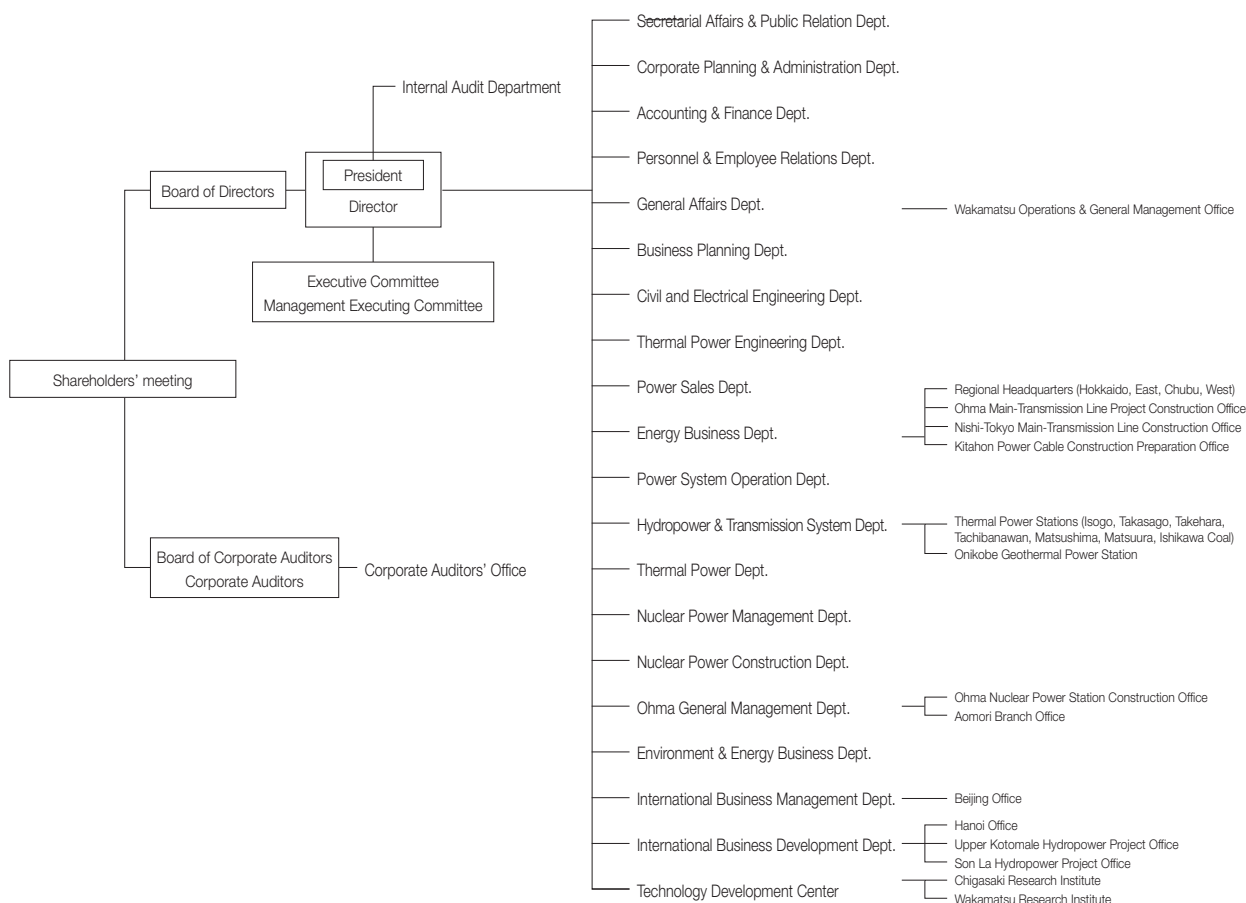
# CORPORATE INFORMATION

(As of March 31, 2010)

Corporate Name	Electric Power Development Co., Ltd.
Communication Name	J-POWER
Date of Establishment	Sept. 16, 1952
Headquarters Address	15-1, Ginza 6-chome, Chuo-ku, Tokyo 104-8165, Japan
Paid-in Capital	¥152,449,600,000

Number of Shares Authorized	660,000,000
Number of Shares Outstanding	166,569,600
Number of Shareholders	38,263
Stock Exchange Listing	Tokyo
Independent Public Accountants	Ernst & Young ShinNihon
Transfer Agent	The Sumitomo Trust and Banking Co., Ltd.

## Organization Chart



## Main Subsidiaries

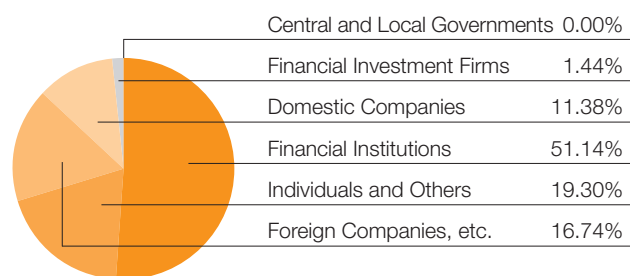
J-POWER USA Development Co., Ltd.  
 J-POWER Generation (Thailand) Co., Ltd.  
 J-POWER Consulting (China) Co., Ltd.

## Major Shareholders

Name or Designation	Number of Shares Held (Thousands of Shares)	Percentage of Total Shares Outstanding (%)
Nippon Life Insurance Company	9,120	5.48
Japan Trustee Services Bank, Ltd. (Trust Account)	8,456	5.08
The Master Trust Bank of Japan, Ltd. (Trust Account)	8,276	4.97
Mizuho Corporate Bank, Ltd.	7,465	4.48
Sumitomo Mitsui Banking Corporation	4,295	2.58
The Bank of Tokyo-Mitsubishi UFJ, Ltd.	4,140	2.49
Japan Trustee Services Bank, Ltd. (Trust Account 9)	3,470	2.08
J-POWER Employees Shareholding Association	3,276	1.97
Daido Life Insurance Company	3,103	1.86
National Mutual Insurance Federation of Agricultural Cooperatives	2,949	1.77

Note: In addition to above, J-POWER holds 16,516,109 shares.

## Breakdown of Issued Shares by Type of Shareholders



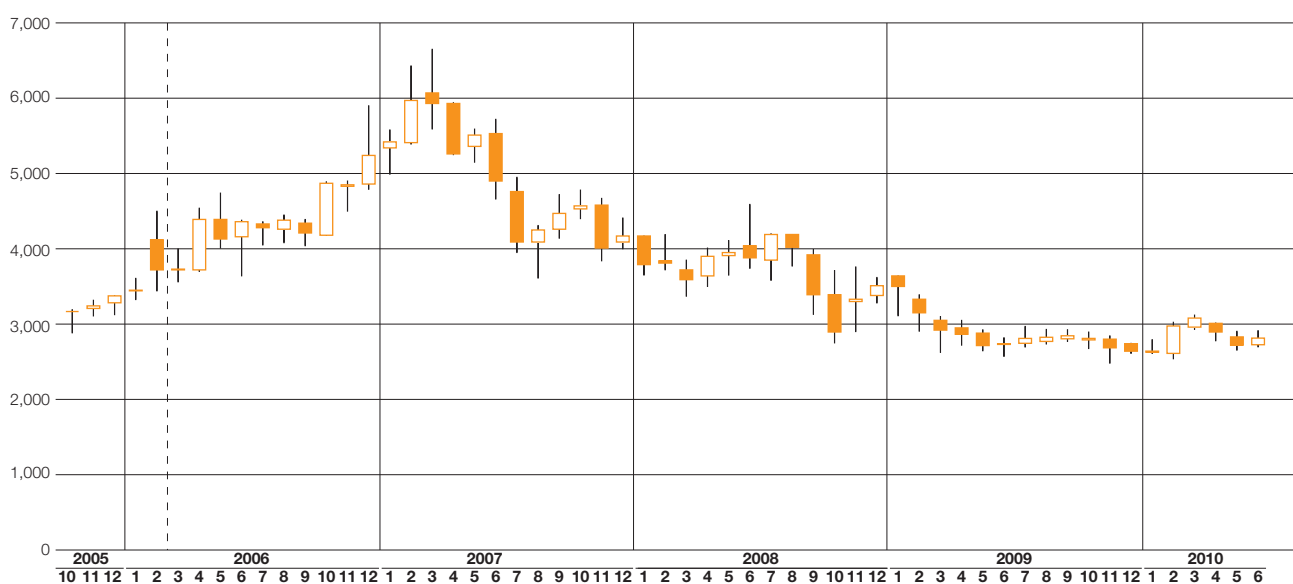
Note: Treasury stock of 16,516,109 shares is included in "Individuals and Others."

## Corporate Bonds and Ratings

	Long-Term	Short-Term
Rating and Investment Information, Inc. (R&I)	AA+	a-1+
Japan Credit Rating Agency, Ltd. (JCR)	AAA	—
Standard & Poor's (S&P)	AA	—
Moody's	Aa2	—

## Common Stock Price Range

Stock Price (Yen)



Note: Stock prices before the 1.2-for-1 stock split that was conducted on March 1, 2006 have been adjusted to the post-split prices.



**Electric Power Development Co., Ltd.**  
Corporate Planning & Administration Department  
Investor Relations Group

15-1, Ginza 6-chome, Chuo-ku, Tokyo 104-8165, JAPAN

TEL: +81-3-3546-2211

FAX: +81-3-3546-9531

E-mail: [investors@jpower.co.jp](mailto:investors@jpower.co.jp)

<http://www.jpower.co.jp>



This annual report was printed entirely on FSC-certified paper using soy-based ink and a waterless printing process.