

Corporate Information

(As of March 31, 2007)

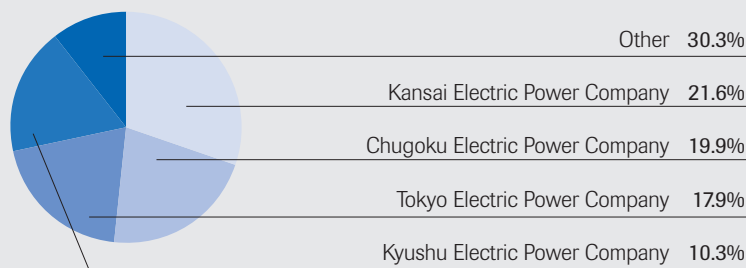
Corporate Name	Electric Power Development Co., Ltd.
Communication Name	J-POWER
Date of Establishment	Sept. 16, 1952
Headquarters Address	15-1, Ginza 6-Chome, Chuo-ku, Tokyo, 104-8165 Japan
Paid-in capital	¥152,449,600,000
Number of Shares Authorized	660,000,000
Number of Shares Outstanding	166,569,600
Number of Shareholders	36,106
Stock Exchange Listing	Tokyo
Independent Public Accountants	Ernst & Young ShinNihon
Transfer Agent	The Sumitomo Trust and Banking Company, Limited.

Directors and Corporate Auditors

(As of July, 2007)

President (Representative Director) Yoshihiko Nakagaki	Executive Directors Masaharu Fujitomi Toshifumi Watanabe Tomoo Kosugi Koichi Tazawa
Executive Vice Presidents (Representative Director) Shinichiro Ota Kiyoshi Sawabe Masayoshi Kitamura Masashi Hatano	Senior Corporate Auditors (Full-time) Masayuki Hori Akio Ushio
Executive Managing Directors Yasuo Maeda Kanji Shimada Yoshihiko Sakanashi Minoru Hino	Corporate Auditors Yasuo Matsushita Mutsutake Otsuka Hideaki Miyahara

Principal Customers of J-POWER's Electric Power Business



Note: Breakdown of J-POWER's electric power operating revenues by customer.

Regional Network

Domestic

Hokkaido Regional Headquarters
Aomori Branch Office
Tohoku Office
East Regional Headquarters
Chubu Regional Headquarters
Hokuriku Office
West Regional Headquarters
Chugoku Office
Shikoku Office
Kyushu Office

Overseas

Washington Office (U.S.A.)
Beijing Office (China)
Kuala Lumpur Office (Malaysia)
Hanoi Office (Vietnam)

For further information, please contact:

Electric Power Development Co., Ltd.

IR Group

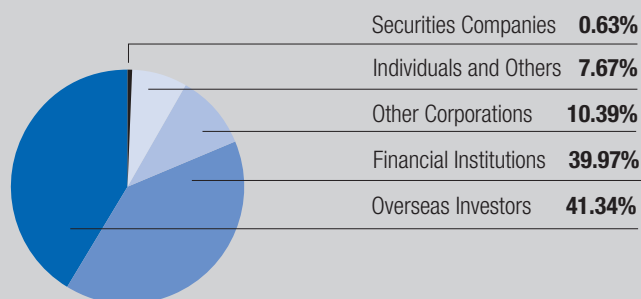
TEL: +81-3-3546-2211 FAX: +81-3-3546-9531

E-mail: Investors@jpower.co.jp

Major Shareholders

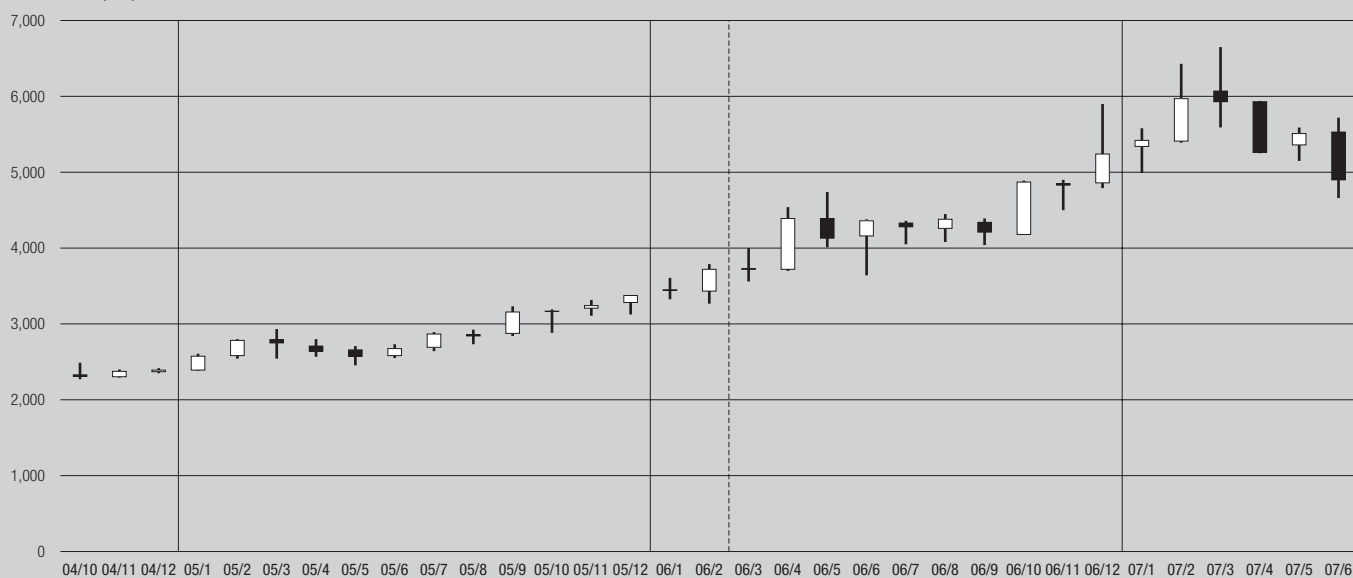
Name or Designation	Number of Shares Held (Thousands of Shares)	Percentage of the Total Shares Outstanding (%)
The Children's Investment Master Fund	16,498	9.90
Nippon Life Insurance Company	9,120	5.48
Mizuho Corporate Bank, Ltd.	8,269	4.96
Deutsche Bank AG London 610	8,195	4.92
The Bank of Tokyo-Mitsubishi UFJ, Ltd.	4,140	2.49
Daido Life Insurance Company	3,658	2.20
Morgan Stanley and Company, Inc.	3,492	2.10
The Master Trust Bank of Japan, Ltd. (Account in Trust)	3,132	1.88
Japan Trustee Services Bank, Ltd. (Account in Trust)	3,084	1.85
National Mutual Insurance Federation of Agricultural Cooperatives	3,039	1.82

Breakdown of Issued Shares by Type of Shareholders



Common Stock Price Range

Stock Price (Yen)



Note: Stock prices before the 1.2-for-one stock split that was conducted on March 1, 2006 have been adjusted to the post-split prices.