

# Corporate Profile/Stock Information (As of March 31, 2024)

Corporate Name	Electric Power Development Co., Ltd.
Communication Name	J-POWER
Date of Establishment	Sept. 16, 1952
Headquarters	6-15-1 Ginza, Chuo-ku, Tokyo, Japan
Paid-in Capital	¥180,502,169,192
Number of Shares Authorized	660,000,000
Number of Shares Issued	183,051,100
Number of Shareholders	118,350
Stock Exchange Listing	Tokyo Stock Exchange
Independent Public Accountants	Ernst & Young ShinNihon LLC
Transfer Agent	Sumitomo Mitsui Trust Bank, Limited

## Major Offices

- Headquarters: 15-1, Ginza 6-chome, Chuo-ku, Tokyo
- East Regional Headquarters: Kawagoe-shi, Saitama
- Chubu Regional Headquarters: Kasugai-shi, Aichi
- West Regional Headquarters: Osaka-shi, Osaka

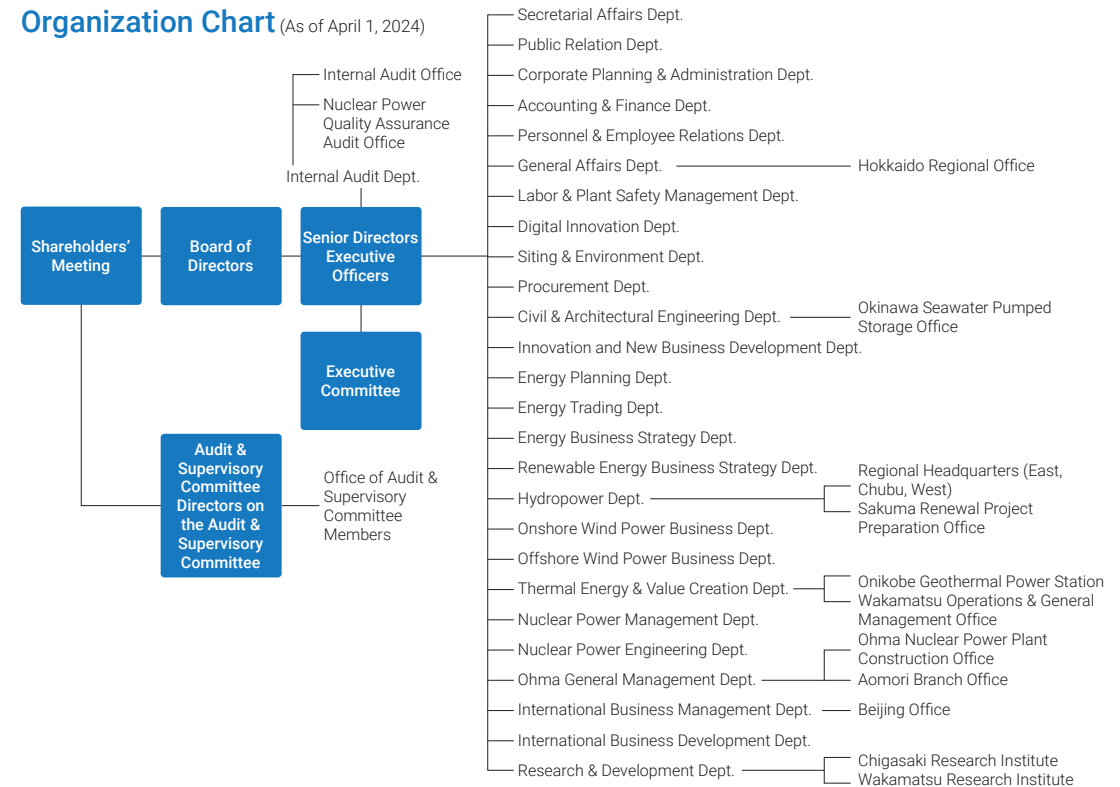
## Major Overseas Subsidiaries

- J-POWER USA Development Co., Ltd.
- J-POWER Generation (Thailand) Co., Ltd.
- J-POWER Consulting (China) Co., Ltd.

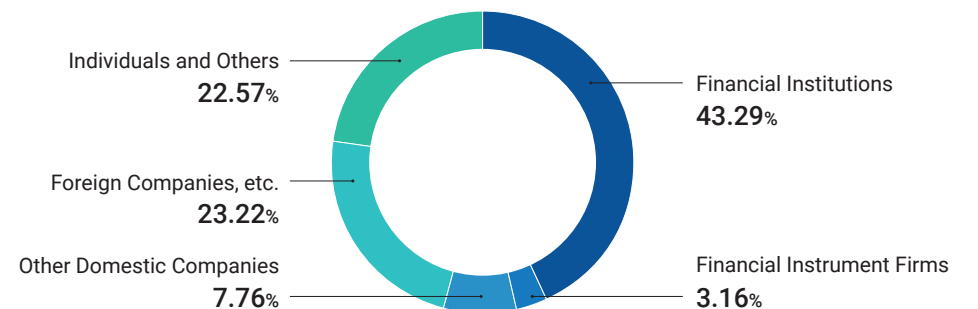
## Major Shareholders (Top 10/As of March 31, 2024)

Name or Designation	Number of Shares Held (Thousands of Shares)	Percentage of Total Shares Issued (%)
The Master Trust Bank of Japan, Ltd. (Trust Account)	24,171	13.21
Custody Bank of Japan, Ltd. (Trust Account)	9,491	5.19
Nippon Life Insurance Company	9,152	5.00
JP MORGAN CHASE BANK 385632	7,193	3.93
J-POWER Employees Shareholding Association	5,006	2.74
Mizuho Bank, Ltd.	4,640	2.53
JP MORGAN CHASE BANK 380072	3,542	1.94
Sumitomo Mitsui Banking Corporation	3,293	1.80
Fukoku Mutual Life Insurance Company	3,028	1.65
MUFG Bank, Ltd.	2,541	1.39

## Organization Chart (As of April 1, 2024)



## Composition of Shareholders (As of March 31, 2024)



(Note) "Individuals and Others" includes 3,505 shares of treasury stock.

## Electric Power Development Co., Ltd. Corporate Planning & Administration Department

6-15-1, Ginza, Chuo-ku, Tokyo, Japan <https://www.jpowers.co.jp/english/>