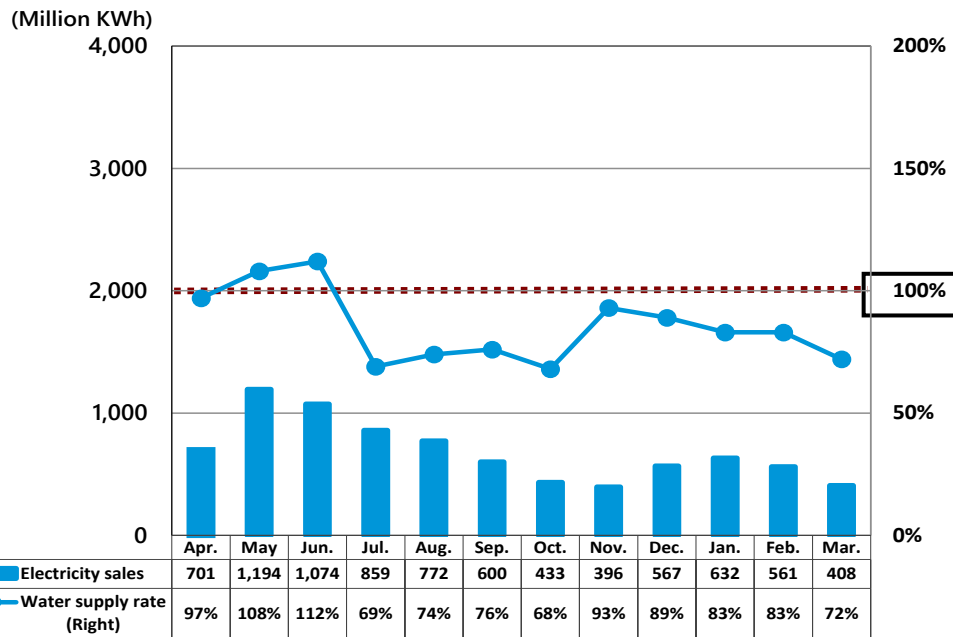


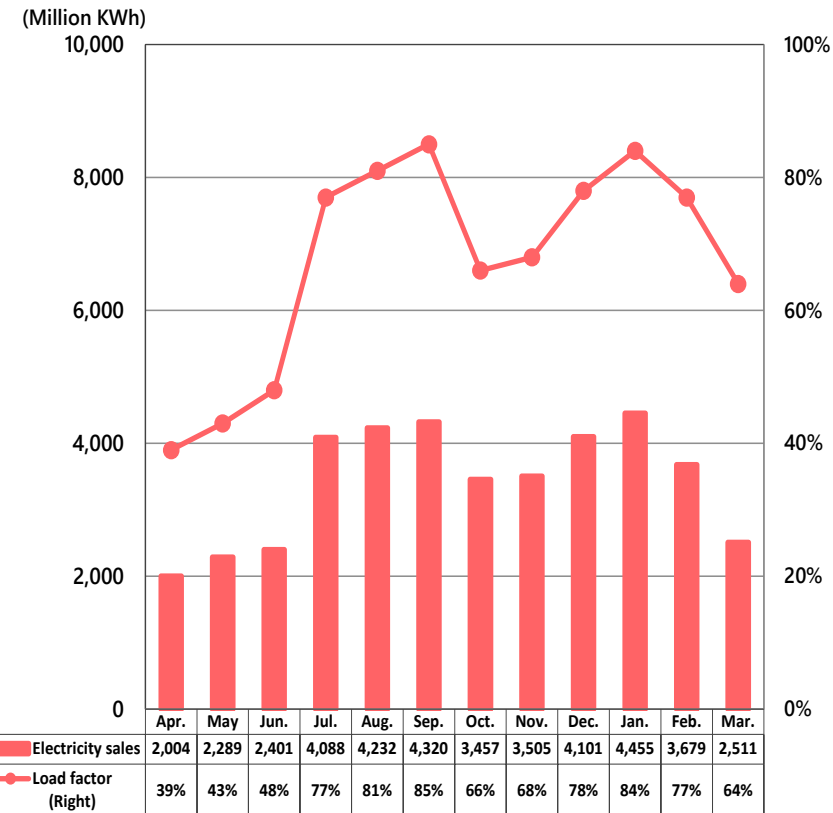
Monthly Electricity Sales: Domestic Power Generation Business



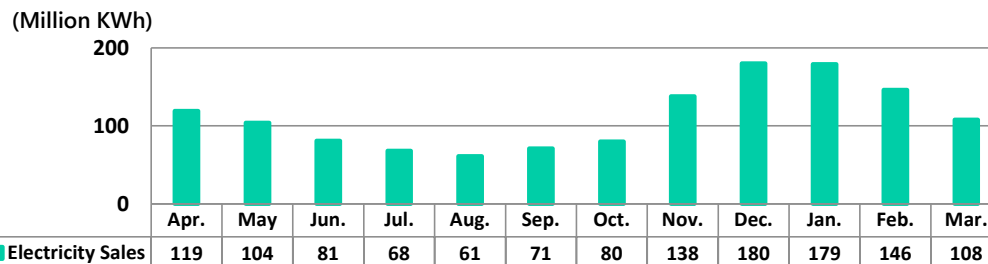
- ▶ **Hydroelectric Power:**
Apr. 2025 - Mar. 2026 Results (cumulative)
Water supply rate \Rightarrow 88%
Electricity sales \Rightarrow 8.2B kWh



- ▶ **Thermal Power:**
Apr. 2025 - Mar. 2026 Results (cumulative)
Load factor \Rightarrow 67%
Electricity sales \Rightarrow 41.0B kWh



- ▶ **Wind Power: Apr. 2025 - Mar. 2026 Results (cumulative)**
Electricity sales \Rightarrow 1.34B kWh

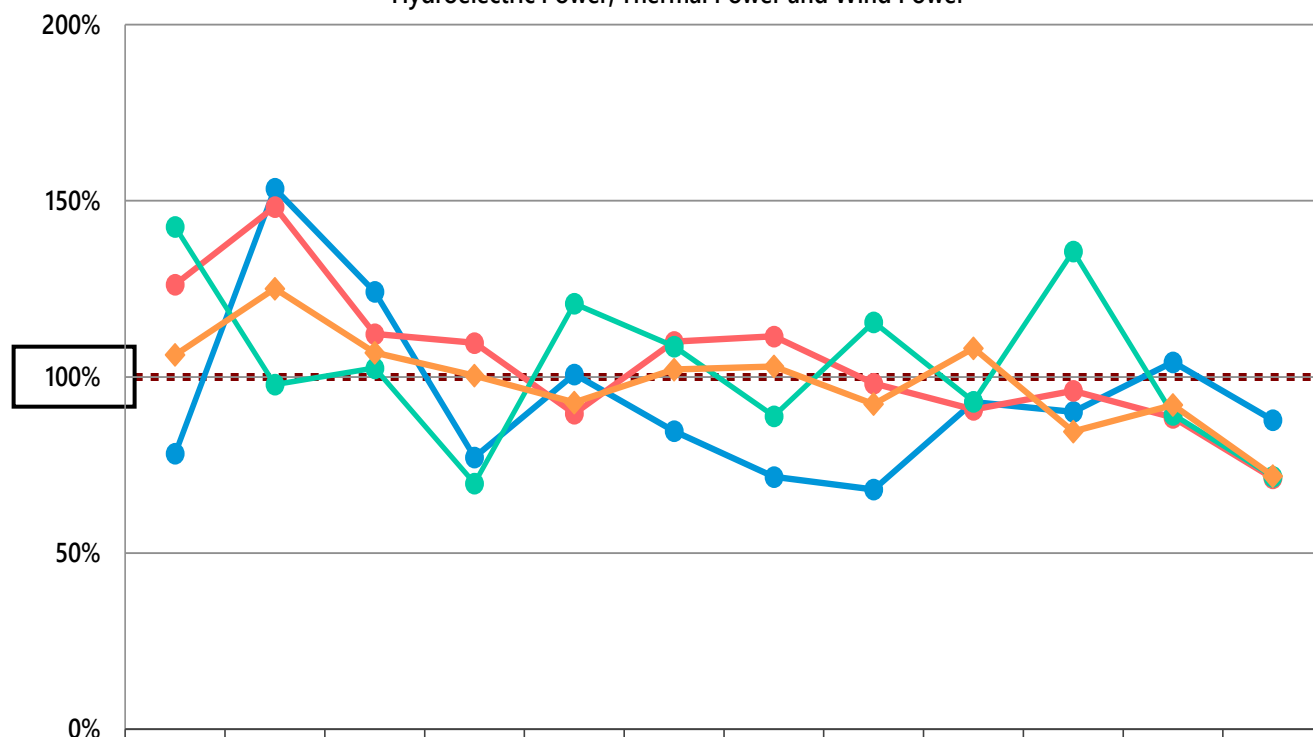


*Thermal power electricity sales are consolidated result while load factor is non-consolidated result.

*Figures are tentative and may be revised afterwards.

► April 2025 - March 2026 Total Results ⇒ 65.6B kWh

Year-on-year Comparison of Monthly Electricity Sales:
Hydroelectric Power, Thermal Power and Wind Power



	Apr.	May	Jun.	Jul.	Aug.	Sep.	Oct.	Nov.	Dec.	Jan.	Feb.	Mar.	Apr. - Mar.
Year-on-year (Hydro)	78%	153%	124%	77%	101%	85%	72%	68%	93%	90%	104%	88%	95%
Year-on-year (Thermal)	126%	148%	112%	110%	90%	110%	112%	98%	91%	96%	88%	71%	100%
Year-on-year (Wind)	143%	98%	103%	70%	121%	109%	89%	116%	93%	136%	89%	72%	100%
Year-on-year Total	106%	125%	107%	100%	93%	102%	103%	92%	108%	84%	92%	72%	97%

*Figures are tentative and may be revised afterwards.

*Total volume includes electricity sales volume of hydro, thermal, wind and electricity purchased from external sources.