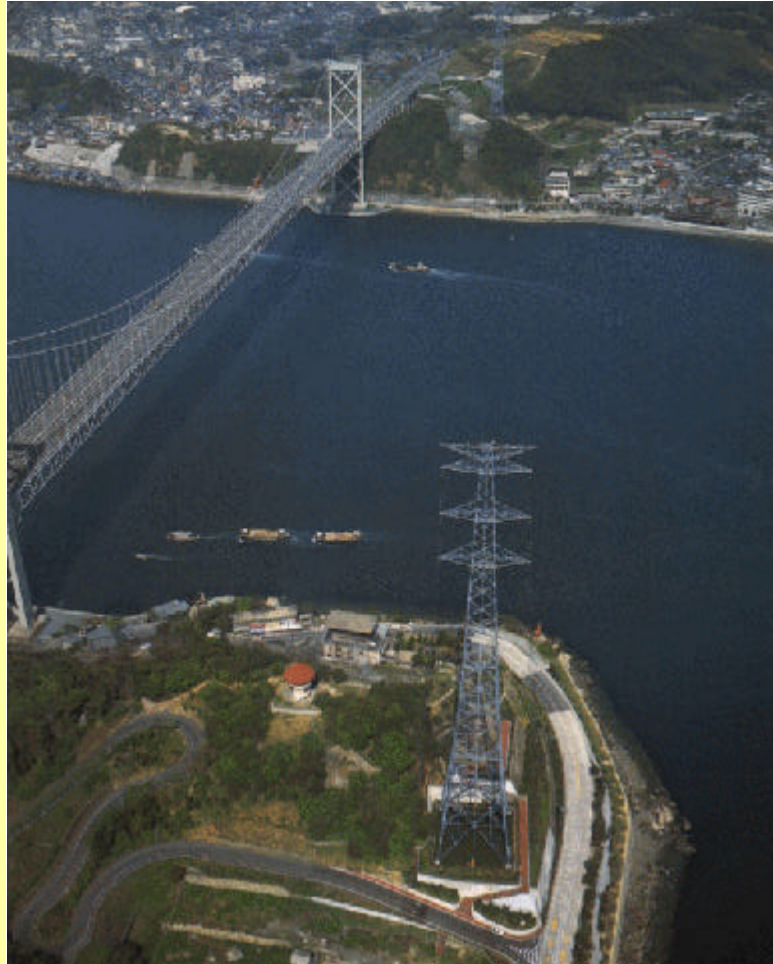


WESTERN AREA INTERCONNECTING LINE

Japan



Kanmon Tie Line



DESCRIPTION

This is a 420km-long 500KV AC transmission line interconnecting two load centers, Fukuoka on Kyushu island and Hyogo on Honshu, the main island. A 988m-long single span is traversing the straits with a vertical clearance of 72m to allow the heavy navigation traffic underneath the line.

NAME OF CLIENT:

Electric Power Development Co., Ltd.(EPDC)

TRANSMISSION FACILITIES:

AC500KV Transmission Line-420km, 3,500MW

SERVICES:

Design

Construction(July,1977-May,1980)

Maintenance(May,1980-)