

MASINLOC

The Philippines



Conceptual View of the Project

DESCRIPTION

The project site Masinloc, 250km north of Metropolitan Manila, has been selected by the National Power Corporation from the 3 sites (San Juan, Limay, Masinloc) considered for the power supply expansion plan for Luzon Island.



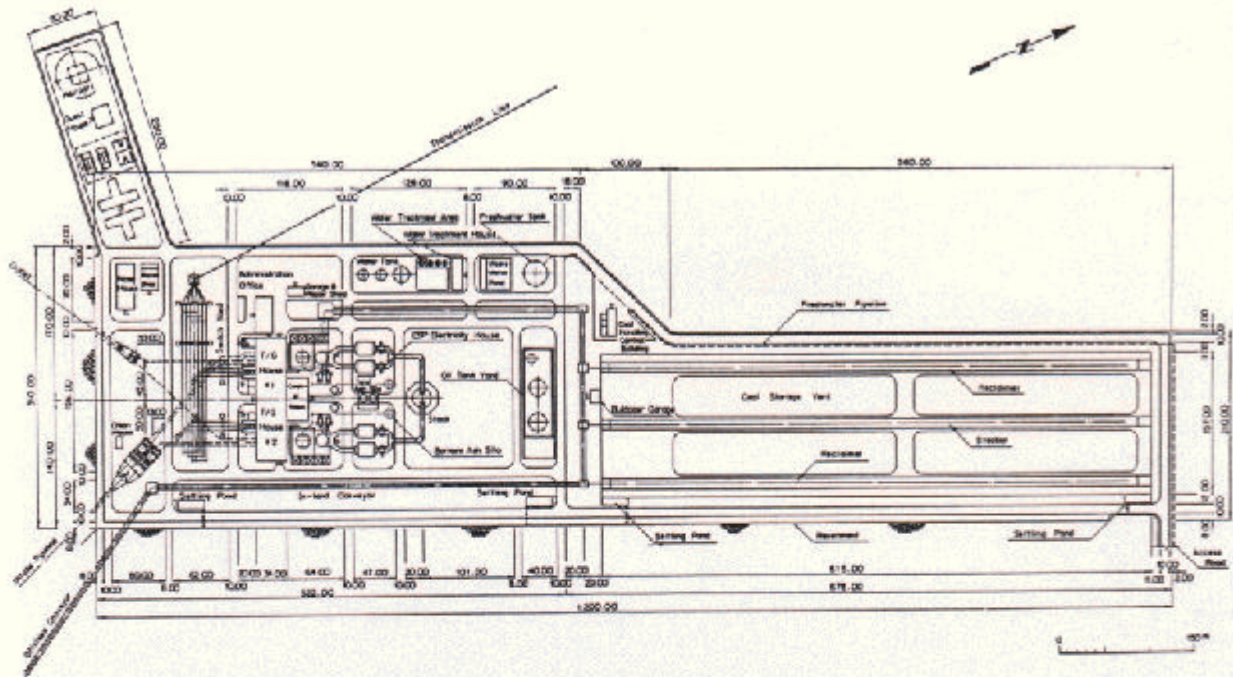
NAME OF CLIENT:

National Power Corporation (NAPOCOR)
Japan International Cooperation Agency (JICA)

CAPACITY: Unit No.1: 300MW, No.2: 300MW

SERVICES:

Feasibility Study (March,1989-February, 1990)
Detailed Design (April,1990 - December, 1990)
Construction Supervision (October, 1993 - June, 1998)



Plant Plot Plan



Masinloc



San Juan



Limay

Outline of MASINLOC Coal-Fired Thermal Power Station

Location of Power Plant		Barangay, Bani, Masinloc, Zambales, Philippines
Site Area		1,060,000m ² (Include Ashdisposal area)
Output of Power Plant		600 MW (2x300MW)
Fuel Used		Overseas Coal
Environment Conservation Measures	Electro static Precipitator	Dry Low Temp. Electro Static Precipitator System
	Waste Water Treatment Facility	Sedimentation Filtration Method

Main Equipment

Boiler	Model	Single-Drum Semi-outdoor Type	
	Amount of Evaporation	2x1,070 t/h	
	Steam Pressure	196 kg/cm ² g	
Turbine	Model	Tandem Compound Reheat-Regenerative Condensing Steam-Turbine	
	Rated Output	2x300MW	
	Steam Pressure	169 kg/cm ² g	
	Steam Temp. Superheater / Reheater	538°C/538°C	
	RPM	3,600 r.p.m.	
Power Generator	Model	Horizontal Shaft 3 Phase	
	Rated Capacity	2x353MVA	
Stock	Steel Reinforced Concrete Concentric Type Height 120 m		
Coal Yard	Area 15,000m ²	Reserved Stock 280,000 tons	