

# PORT KELANG

Malaysia



General View

## DESCRIPTION

EPDC is providing a comprehensive package of consulting services to National Electricity Board for its Port Kelang Phase II Project, including the feasibility study, construction supervision and guidance of test operations.

### ***NAME OF CLIENT:***

National Electricity Board of the States of Malaya (NEB)

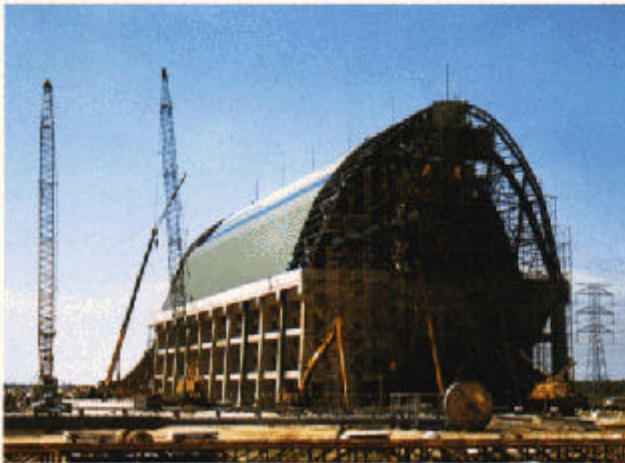
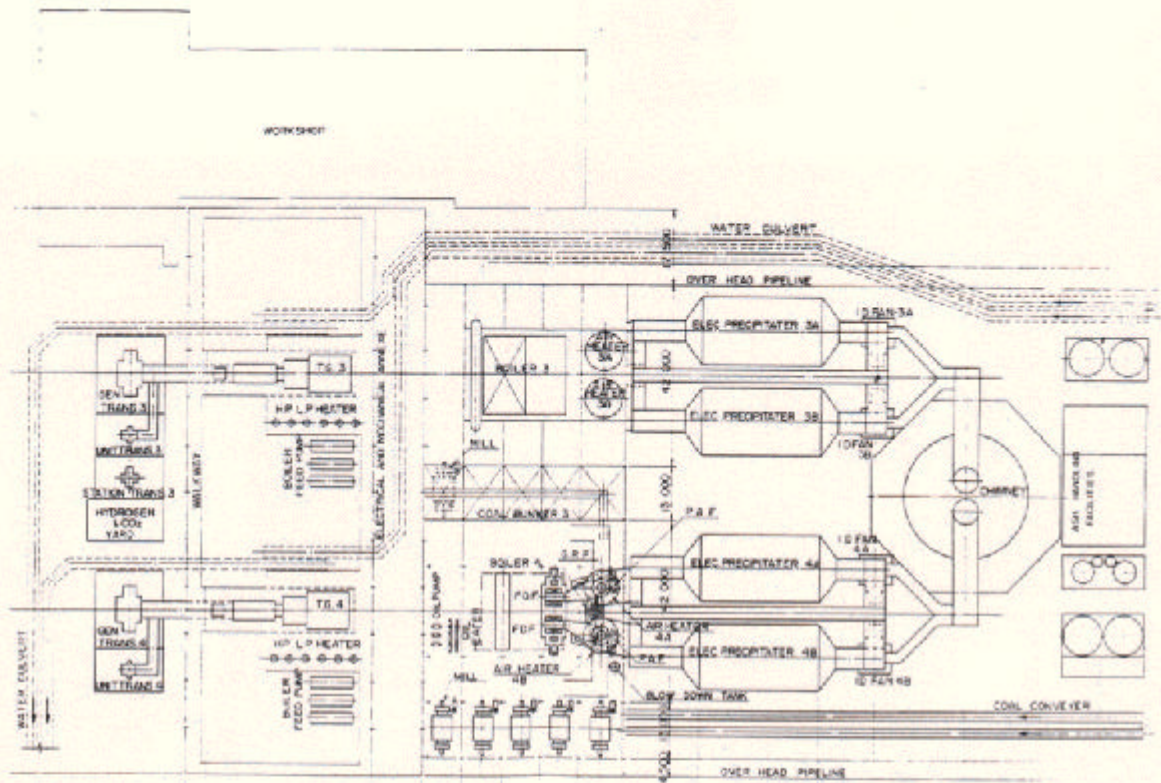
### ***CAPACITY:*** 2 x 300MW

### ***SERVICES:***

Basic Design (May,1982-December,1982)  
Feasibility Study (January,1982-April,1982)  
Construction Supervision Phase II (July,1983-May,1989)  
Construction Supervision Phase III (November, 1990-June, 1999)



## General Plot Plan



Slot Bunker

### Feasibility Study

In addition to general feasibility study, EPDC has conducted the environmental impact assessment study and fuel selection study.

### Construction Supervision

EPDC is providing the following services as a part of construction supervision.

- 1 Drawings
- 2 Construction Supervision
- 3 Preparation of Progress Report
- 4 Test Operation