

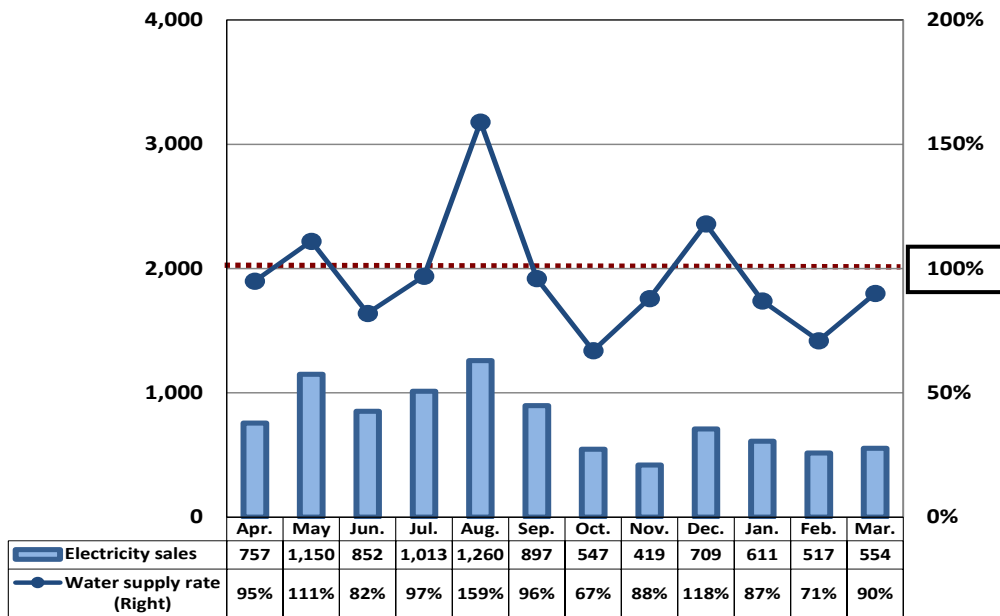
Monthly Electricity Sales: Domestic Power Generation Business



▶ Hydroelectric Power: Apr. 2021 - Mar. 2022 Results (cumulative)

Water supply rate ⇒ 99%
Electricity sales ⇒ 9.2B kWh

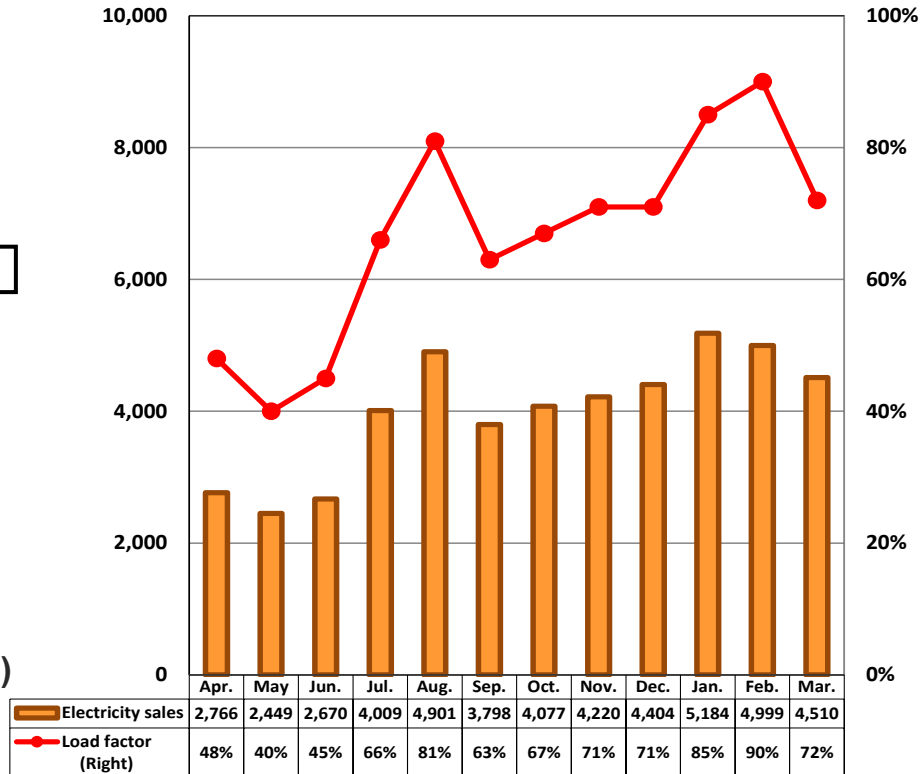
(Million KWh)



▶ Thermal Power: Apr. 2021 - Mar. 2022 Results (cumulative)

Load factor ⇒ 67%
Electricity sales ⇒ 47.9B kWh

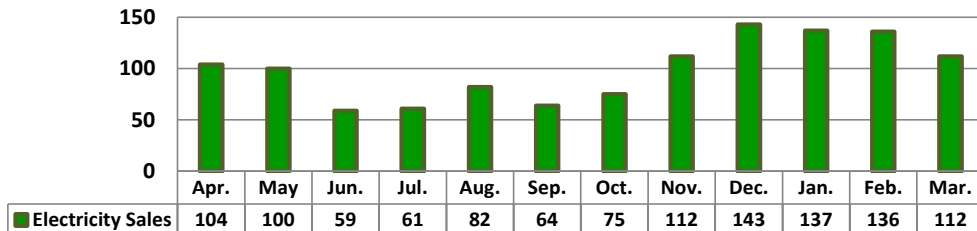
(Million KWh)



▶ Wind Power: Apr. 2021 - Mar. 2022 Results (cumulative)

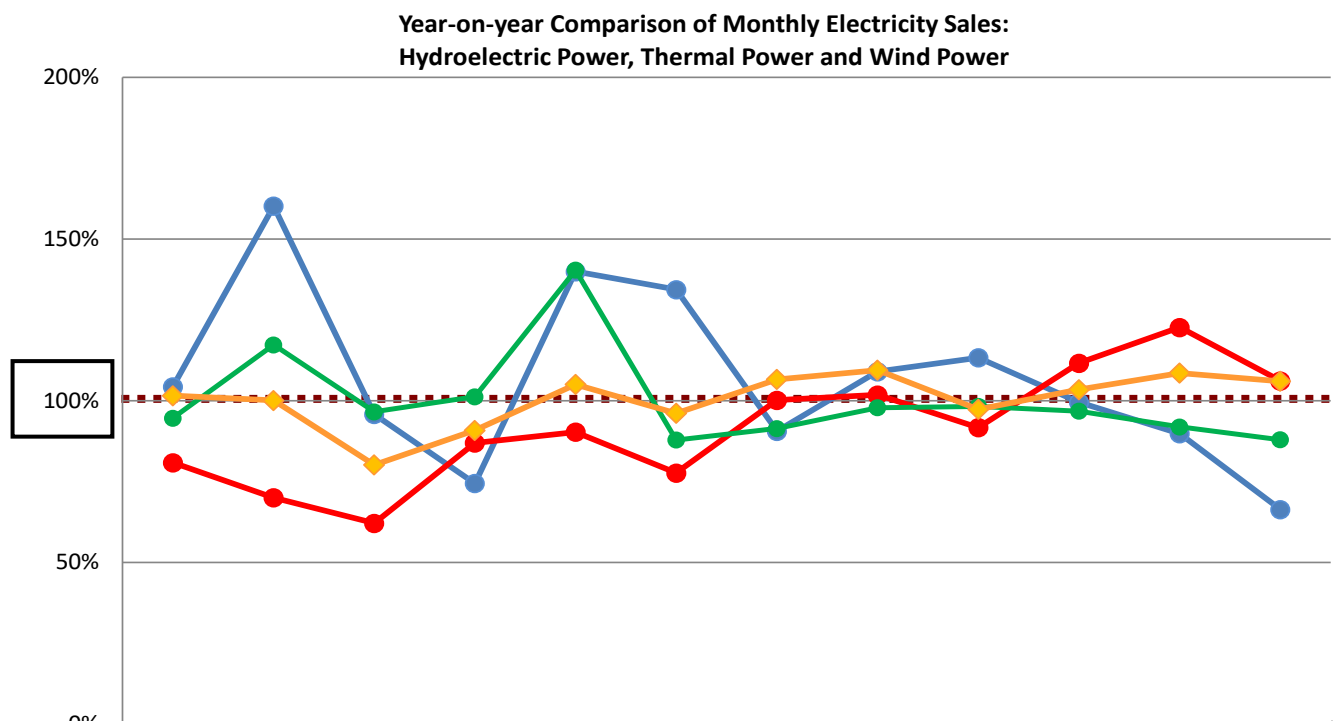
Electricity sales ⇒ 1.19B kWh

(Million KWh)



*Thermal power electricity sales are consolidated result while load factor is non-consolidated result.

▶ **April 2021 - March 2022 Total Results (cumulative) ⇒ 74.7B kWh**



| | Apr. | May | Jun. | Jul. | Aug. | Sep. | Oct. | Nov. | Dec. | Jan. | Feb. | Mar. | Apr. - Mar. |
|------------------------|------|------|------|------|------|------|------|------|------|------|------|------|-------------|
| Year-on-year (Hydro) | 104% | 160% | 96% | 74% | 140% | 134% | 91% | 109% | 113% | 100% | 90% | 66% | 104% |
| Year-on-year (Thermal) | 81% | 70% | 62% | 87% | 90% | 78% | 100% | 102% | 92% | 112% | 123% | 106% | 92% |
| Year-on-year (Wind) | 95% | 117% | 97% | 101% | 140% | 88% | 91% | 98% | 98% | 97% | 92% | 88% | 98% |
| Year-on-year Total | 102% | 100% | 80% | 91% | 105% | 96% | 107% | 109% | 97% | 103% | 109% | 106% | 100% |

* Figures are tentative and may be revised afterwards.

* Total volume includes electricity sales volume of hydro, thermal, wind and electricity purchased from external sources.